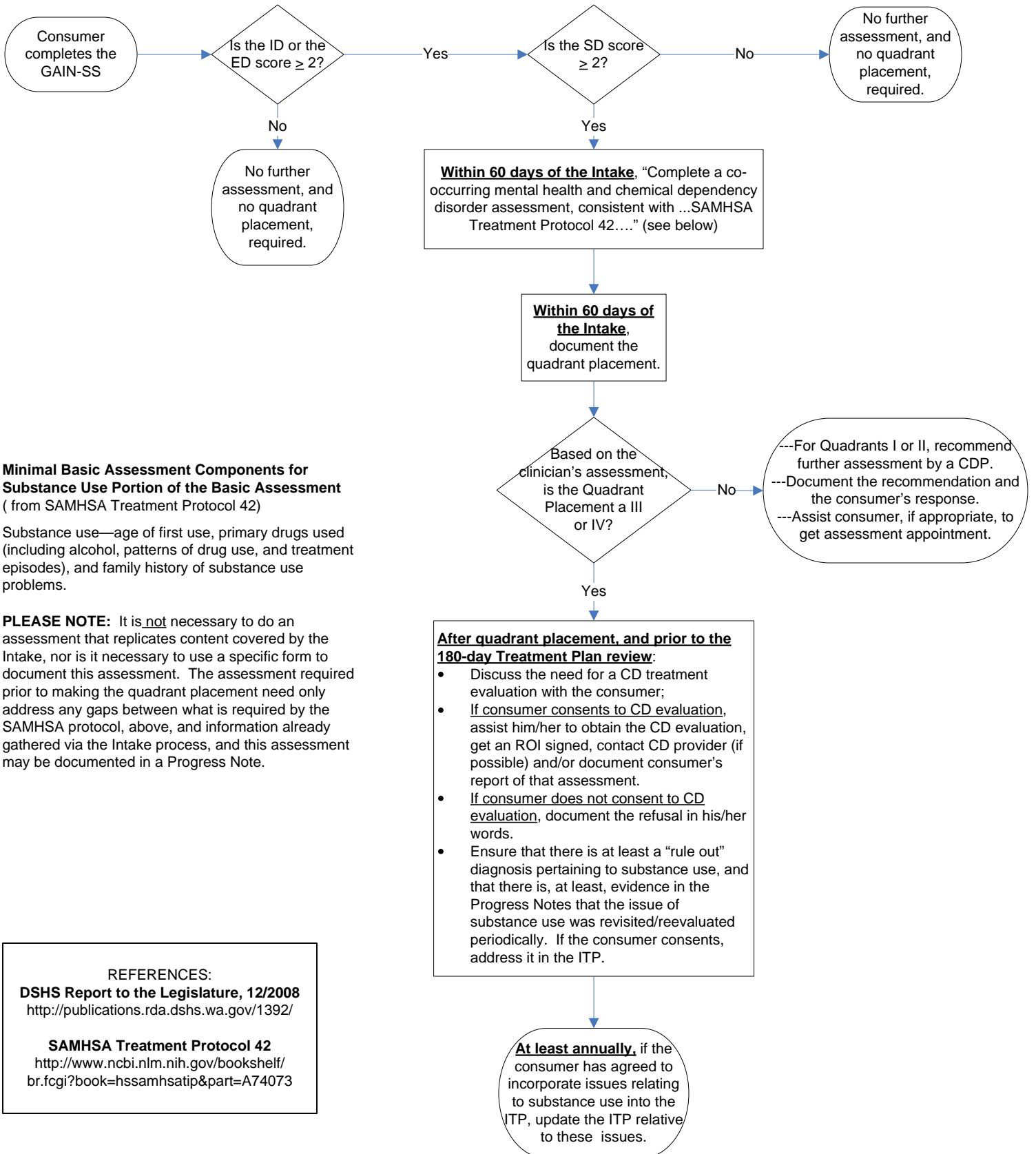


Co-Occurring Disorder Screening, Assessment, Referral and Treatment Planning Process



Minimal Basic Assessment Components for Substance Use Portion of the Basic Assessment
(from SAMHSA Treatment Protocol 42)

Substance use—age of first use, primary drugs used (including alcohol, patterns of drug use, and treatment episodes), and family history of substance use problems.

PLEASE NOTE: It is not necessary to do an assessment that replicates content covered by the Intake, nor is it necessary to use a specific form to document this assessment. The assessment required prior to making the quadrant placement need only address any gaps between what is required by the SAMHSA protocol, above, and information already gathered via the Intake process, and this assessment may be documented in a Progress Note.

REFERENCES:
DSHS Report to the Legislature, 12/2008
<http://publications.rda.dshs.wa.gov/1392/>
SAMHSA Treatment Protocol 42
<http://www.ncbi.nlm.nih.gov/bookshelf/br.fcgi?book=hssamhsatip&part=A74073>